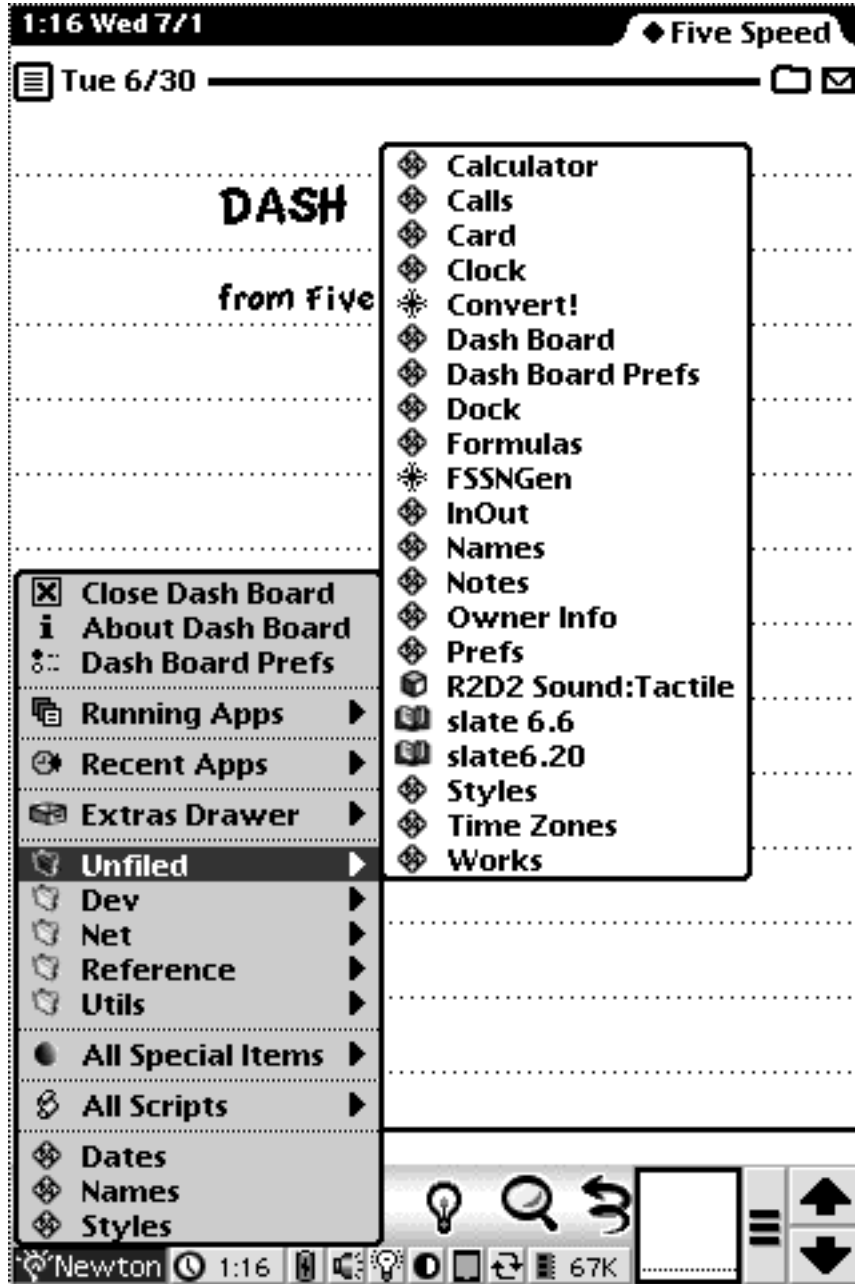


DASH BOARD USER'S GUIDE

Version 1.0



From Five Speed Software
<http://www.fivespeed.com>

TABLE OF CONTENTS

1. Welcome to Dash Board
2. The Dash Board Button Bar
3. The Dash Board Prefs app
4. Prefs: The Newton Menu Panel
5. Prefs: The Letter Launcher Panel
6. Prefs: The Scripts Panel
7. Prefs: The Misc. Panel
8. Registering Dash Board & Contacting Five Speed Software

1. WELCOME TO DASH BOARD

Dash Board - The Ultimate Button Bar

Dash Board is a replacement for the built in MessagePad 2000 and 2100 button bar. It provides a much, much more powerful interface than the standard button bar, for novices and power users alike. It offers complete and instant access to all of the Newton's environmental controls (volume, contrast, screen orientation, etc.). It provides a true hierarchical menu for accessing programs, shortcuts, and scripts quickly without leaving whatever application you're currently using. It has built-in Running Apps and Recent Apps menus, which you can either access from the Newton Menu or by setting them to have their own dedicated buttons on the button bar. Dash Board's Letter Launcher box offers access to any installed program, shortcut, or script, simply by writing a single letter, Dash Board includes a slew of convenient "Special Items"--commands built into Dash Board to automate common tasks, like creating a new To Do task, or turning on handwriting recognition Guest Mode. You can also make your own shortcuts by creating scripts in Dash Board's script editor--the possibilities are endless. And because all of this functionality is on the button bar, it is always right there on the screen, ready for instant access no matter what you happen to be doing with your Newton.

Hierarchical Newton Menu

Dash Board finally gives Newton users a fully customizable hierarchical menu, similar to the Apple Menu on Mac OS or the Start Button on Windows 95. You can set up your Newton menu and submenus to provide instant access to any installed package, any of Dash Board's built-in Special Items, or any user script. There are also special submenus available to list the contents of Extras Drawer folders, list all of Dash Board's Special Items, list all user scripts, recently-used apps, running apps, and so on. You can, of course, create your own custom submenus and fill them with whatever you like.

The Letter Launcher

The Letter Launcher allows you to launch a program, script, or Dash Board Special Item simply by writing the associated letter (or letters) in the box, which is conveniently always on the button bar so it is never obscured by other apps. For example, just write "N" in the box, and the Names program will open. Or write "C" to run the "Connect" special item (which opens the Dock program and automatically connects using the default settings). Of course, you can completely customize the Letter Launcher in the prefs. After writing a letter, the Letter

Launcher displays the recognized letter and the name of the corresponding action in the box.

Scripts

Advanced users and developers can customize their Newtons even further with Dash Board's scripting capabilities. Dash Board allows you to create and save scripts using NewtonScript, which can then be run via the Newton Menu or the Letter Launcher. You create and manage your user scripts in the Scripts panel of the Dash Board Prefs app.

Cool Convenience Features

Along the bottom of the button bar, between the Newton Menu button and the Letter Launcher box, there are several convenience buttons. The idea behind these is to put all of the "environmental" controls of your Newton in a convenient place. Having to open the Extras Drawer or another app just to check your battery or volume level--or rotate the screen, or change the contrast, or check your free storage space, etc.--strikes us as being really inconvenient, as if you had to open your car's glove compartment to check the gas or turn on your headlights. With Dash Board installed on your Newton, you don't have to.

Always There When You Need It

Because Dash Board replaces the system button bar, all of this functionality is always right there on the screen when you need it.

To see what Dash Board can do, we recommend that you just go ahead and install it. The rest of this manual covers all of Dash Board's features in detail--you may want to refer to it in order to help you customize Dash Board to suit your own particular needs.

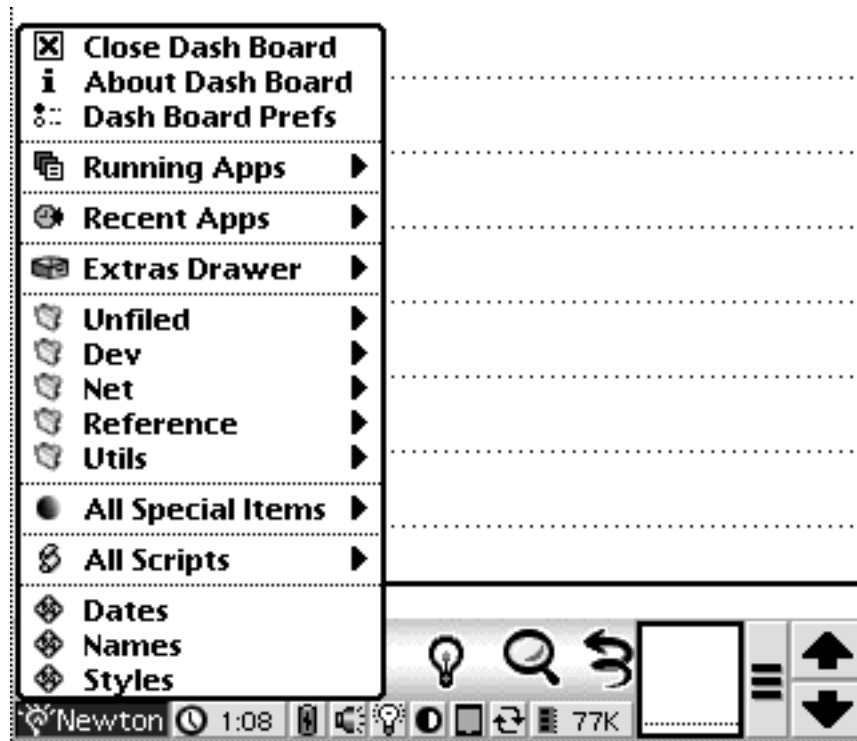
We strongly recommend that you invest a few minutes to customize the Newton Menu and Letter Launcher preferences to suit your particular needs and system configuration.

Thanks for using Dash Board!

2. THE DASH BOARD BUTTON BAR

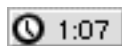
This section covers the features of the Dash Board button bar in detail. Tapping the icons at the top of the bar launches the corresponding program, much like the standard system button bar. The rest of the Dash Board button bar's features are described below.

The Newton Menu



The Newton Menu is a customizable, hierarchical menu for Newton OS, similar to the Windows 95 Start Button or the Apple Menu under Mac OS. You can add programs, Dash Board special items, scripts, Dash Board special submenus and custom submenus to the Newton menu. For details on how to customize your Newton Menu, see Section 4 - The Newton Menu Panel.

The Time Button



The Time Button has a small clock icon and displays the current time. So one glance at Dash Board will give you the current time no matter what program you are using. Tapping the Time Button opens the built in system Clock app.

The Battery Status Button



The Battery Status button lets you check the battery charge level at a glance. The icon shows the battery level--as the battery drains, the icon will change to reflect the current charge. A small black electric bolt icon (shown above) will appear in the center of the battery when the Newton device is connected to AC Power.

The Volume Button



The Volume Button allows you to quickly set the system volume. Tapping it displays a popup view that has a volume slider and a Mute/Unmute button. The Mute button mutes the system volume, whereas the Unmute button restores the system volume to the level it was at before it was muted (so you don't have to drag the slider). Additionally, the volume button's icon changes to reflect whether the system volume is set to 0 (muted) or not.

The Backlight Button



The Backlight Button toggles the backlight on and off. Its icon also updates to reflect whether the backlight is currently enabled.

The Contrast Button



The Contrast button displays a popup view that allows you to set the screen contrast without opening the Extras Drawer.

The Store Button



The Store Button pops up a menu with a list of the currently installed stores (internal memory or storage cards) and allows you to choose the one you want to be the default store (the one that new information is saved on by default). Also, this menu shows the free space available on each store as well, so you don't have to open the Card app to find out. The Store Button icon changes to reflect

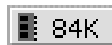
whether the default store is set to Internal (Newton icon) or a storage card (card icon).

The Rotate Button



The Rotate Button is the equivalent of the Rotate button in the Extras Drawer; it allows you to rotate the screen and set the position of the buttonbar or controls (left or right).

The Heap Button



The Heap Button shows the current amount of free heap memory (heap memory is roughly analogous to free RAM on a desktop computer, though the Newton system is designed to use much smaller amounts). Tapping the button performs a "garbage collection" (frees up memory that is not reserved by other programs) and updates the display immediately.

The Letter Launcher



The Letter Launcher box allows you to access programs, scripts, or Dash Board special items, simply by writing a letter (or letters) in the box. You should configure the Letter Launcher to meet your needs; see Section 5 - The Letter Launcher Panel for information on how to do this. By default, writing a "?" in the Letter Launcher box will show a list of currently defined Letter Launcher shortcuts.

Note also that in cases where the letter you enter in the Letter Launcher is not recognized as a valid shortcut, Dash Board asks the system for it's list of "best guesses" as to the letter that was written (i.e., the list that appears when you double-tap a misrecognized word in the Notes application). If this list includes a valid Letter Launcher shortcut, Dash Board executes that shortcut automatically. In this case, a "?" will appear in the Letter Launcher box after the recognized letter.

WARNING: If you create scripts that delete data or perform actions which might have undesirable consequences, we recommend that you do **not** add shortcuts

for these items to the Letter Launcher, to protect against the system misrecognizing your input and performing these scripts.

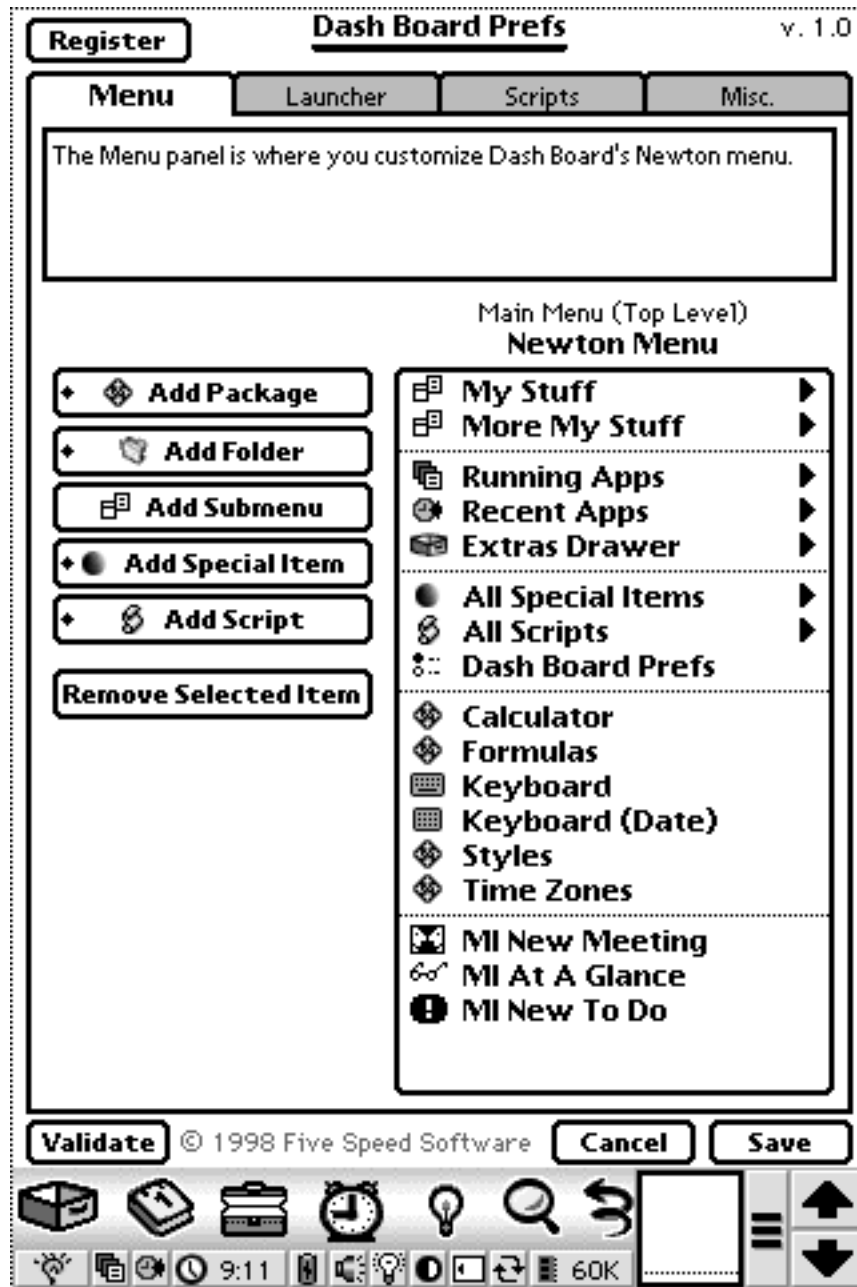
The Scrollers



Dash Board's Up, Down, and Overview buttons are shown above. These act identically to the standard button bar buttons.

3. DASH BOARD PREFS

The Dash Board Prefs app is where you configure and customize Dash Board. General features are described below; the individual panels are described in subsequent chapters.



Cancel vs. Save

After modifying Dash Board's preferences, you must tap the Save button in order to save the changes and update Dash Board. If you make changes you wish to

undo, you can tap the Cancel button to exit Dash Board Prefs without saving (Dash Board's prefs will not be modified in this case).

WARNING: The only exception to the above is with regards to scripts. If you create or delete scripts in the Scripts panel, they changes will be saved immediately. Therefore, please be careful when deleting scripts--it is not undoable!

Validate

The Validate button at the bottom of the Dash Board Prefs app will automatically scan Dash Board's prefs and find references to missing packages or scripts. It can optionally remove all such references, or prompt you for what to do for each one. This is useful when you have added programs or scripts to your Letter Launcher or Newton Menu configuration, and then delete those programs or scripts. By using the Validate function, you don't have to remove those references by hand.

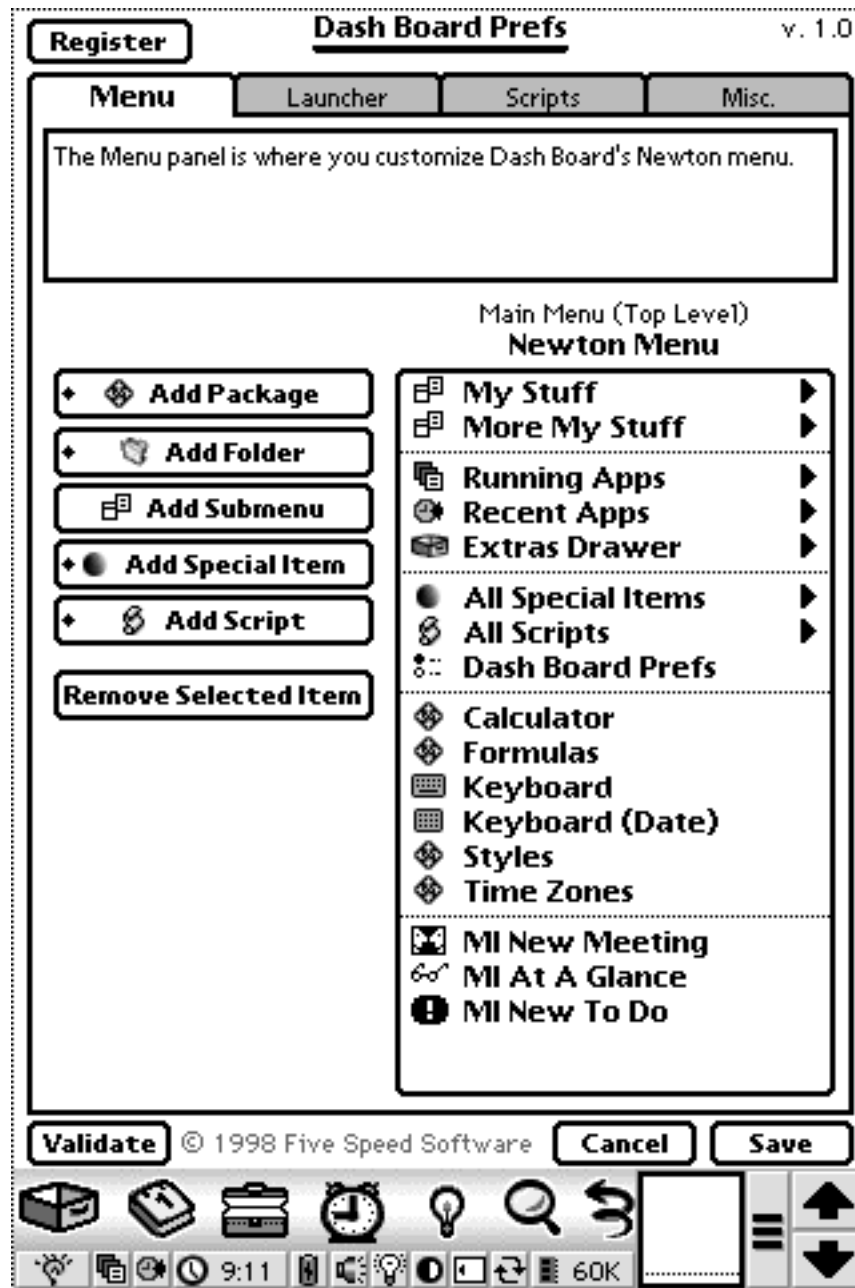
Please note that if you have programs or scripts stored on a card that is not inserted, those items will also be flagged as missing--don't delete such references if you plan to reinsert the card later.

Register

The Register button at the top of the Dash Board prefs screen appears if Dash Board is running in demo mode. If you purchase Dash Board after trying out the demo, you will receive a registration code from Five Speed Software. After you receive it, tap the Register button to enter your code.

For more information about how to purchase Dash Board and receive your registration code, please see Section 8 - Registering Dash Board & Contacting Five Speed Software.

4. THE NEWTON MENU PANEL



The Newton Menu panel is where you configure Dash Board's Newton Menu. To add an item, use the buttons on the left side of the screen. If an item is currently selected, the item is inserted immediately below the selected item; otherwise it is inserted at the bottom of the menu. You can drag and drop items within the menu view on the right side, to rearrange them. To delete an item from the menu, tap it in the menu view at the right, then tap the Remove Selected Item button.

Adding A Package

To add a package to the currently visible menu, tap the Add Package button. Note that the package must not be frozen at the time you add it. After you add it however, the package can be frozen and Dash Board will still be able to find it.

Adding An Extras Drawer Folder Submenu

Extras Drawer Folder Submenus are special submenus that you can put in the Newton menu, which list the packages in the corresponding folder in the Extras Drawer. To add an Extras Drawer Folder Submenu, tap the Add Folder button.

Adding A Custom Submenu

To add your own custom submenu, tap the Add Submenu button. You will be prompted for a name for your submenu. To edit its contents, tap it once in the menu to select it. Above the menu, a right arrow will appear. Tap the right arrow to change the menu view to the new submenu. Then you can add items to it.

To move back up one level of the menu hierarchy, tap the left arrow.

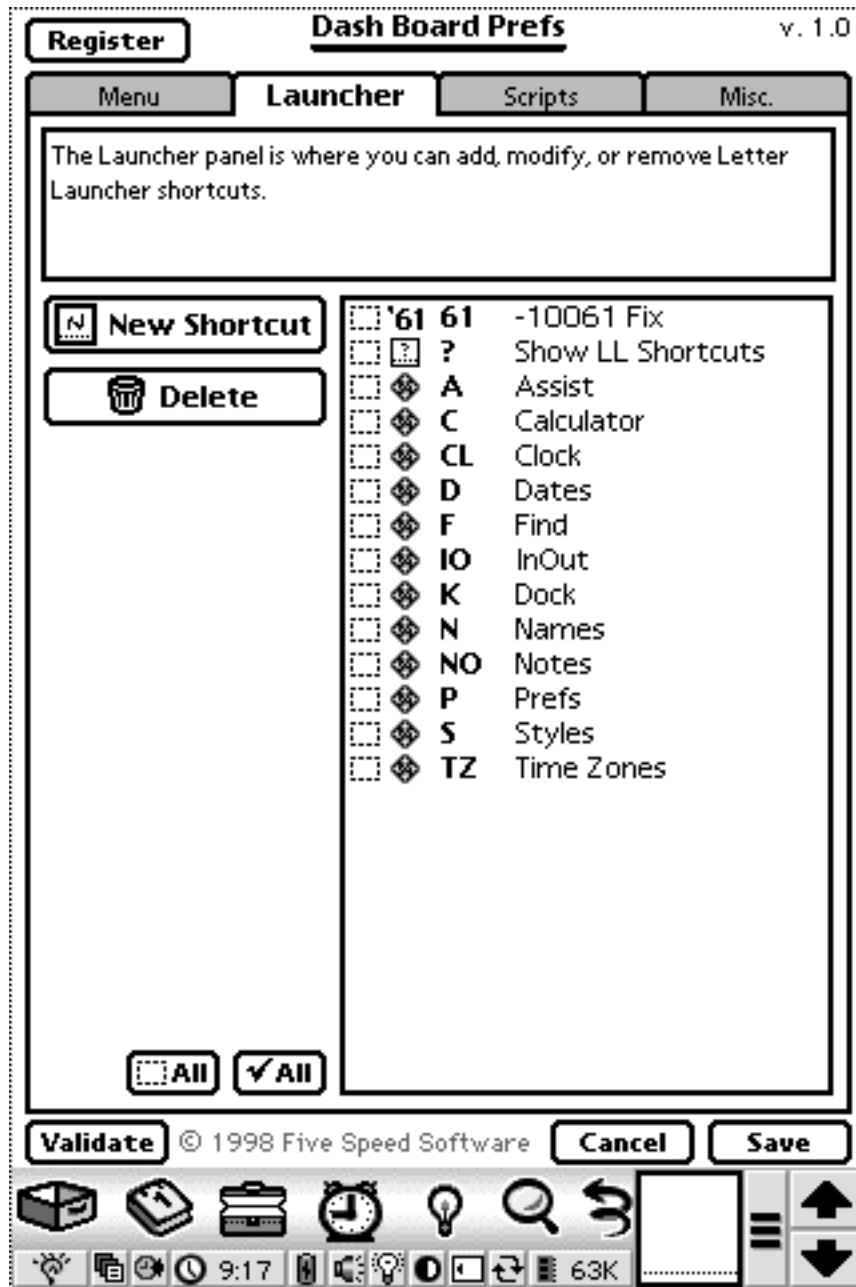
Adding A Special Item

To add a Special Item, tap the Add Special Item button. A Special Item is a special command that is built into Dash Board, to automate a common task such as creating a new meeting or turning on handwriting recognition Guest Mode. There are many Special Items built into Dash Board.

Adding A Script

To add a script to the menu, tap the Add Script button. All currently installed Dash Board scripts will be shown in the menu.

5. THE LETTER LAUNCHER PANEL



The Letter launcher panel is where you customize your Letter Launcher shortcuts. You can add a shortcut for any installed program, script, or Dash Board Special Item. (Note that packages must not be frozen at the time they are added; after they are added they can be frozen again.)

To delete a shortcut, check the selection checkbox next to its name in the list. Then tap the Delete button. You can select multiple shortcuts at once.

To edit a shortcut, tap its name in the list. The Letter Launcher Shortcut Edit Slip will appear (see below).

To create a new shortcut, tap the New Shortcut button. The Letter Launcher Shortcut Edit Slip will appear (see below).

Letter Launcher Shortcut

To create a new Letter Launcher shortcut, enter a letter (or letters) and then choose a corresponding action, using the buttons below.

Shortcut:

~ 1 2 3 4 5 6 7 8 9 0 - = del
→ q w e r t y u i o p [] \
caps a s d f g h j k l ; ' ↵
shift z x c v b n m , . / shift
option ← →

Choose what this shortcut should do:

+ Launch Package

+ Special Item

+ Run Script

Cancel Add

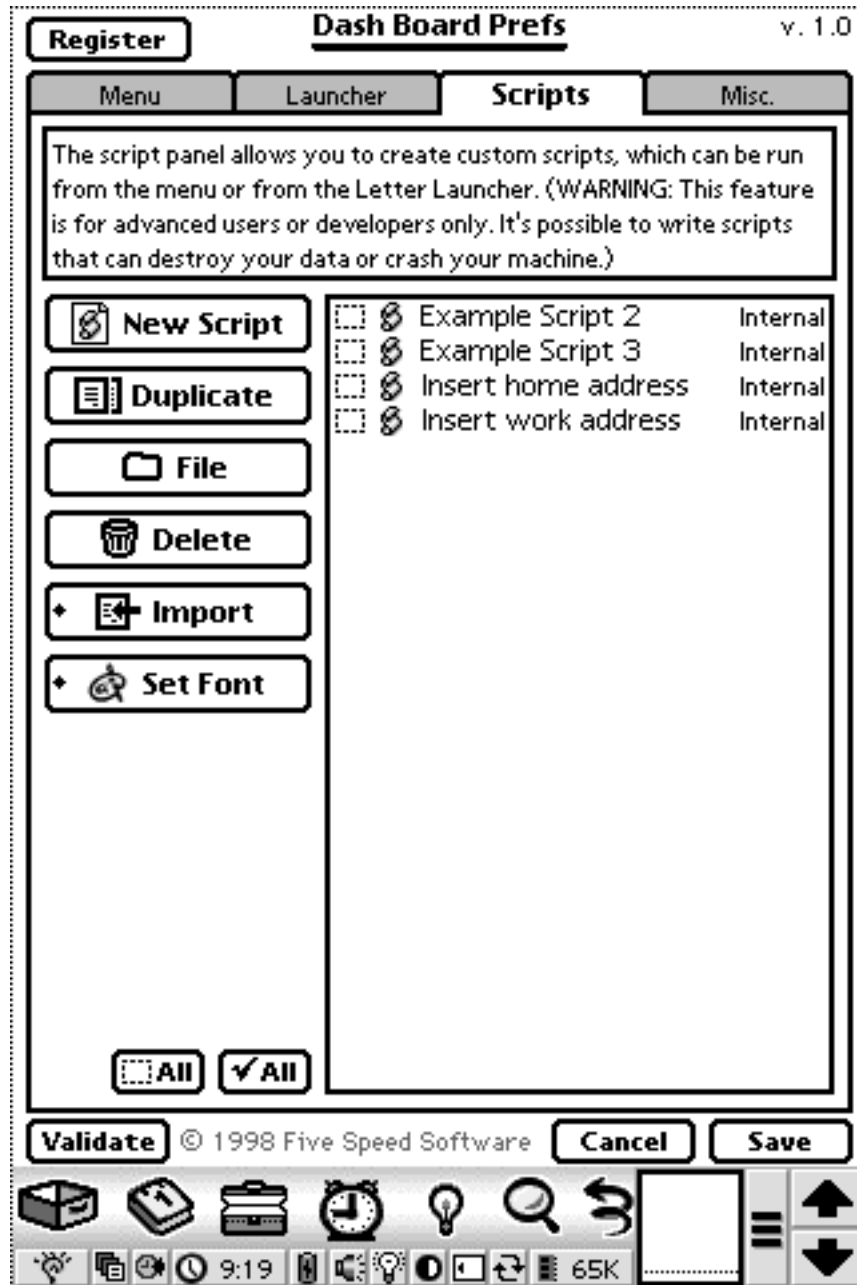
Enter the shortcut text in the Shortcut box. Then use the buttons at the bottom left to choose what that shortcut should do: launch a package, execute a Special Item, or run a script. Tap the Add button to add the shortcut to the list. (If you are editing a previously defined shortcut, the button will read "Save"--tap it to save the changes you made.

The Cancel button closes the slip without saving the changes.

6. THE SCRIPTS PANEL

NOTE: This section of the manual concerns how to use the Scripts panel. For more information on how to create scripts with Dash Board, please see the Dash Board Scripting Page at: <http://www.fivespeed.com/dashboard/scripting/>

The Scripts panel is where you create, edit, and manage Dash Board scripts. A script is stored as plain text NewtonScript code. When Dash Board runs a script, it compiles the code into an executable NewtonScript function and executes it.



The list at the right allows you to select scripts by checking the checkboxes next to the script names. You can use the Duplicate, File and Delete buttons after selecting one or more scripts. Tapping the name of a script in the list opens that script in the script editor

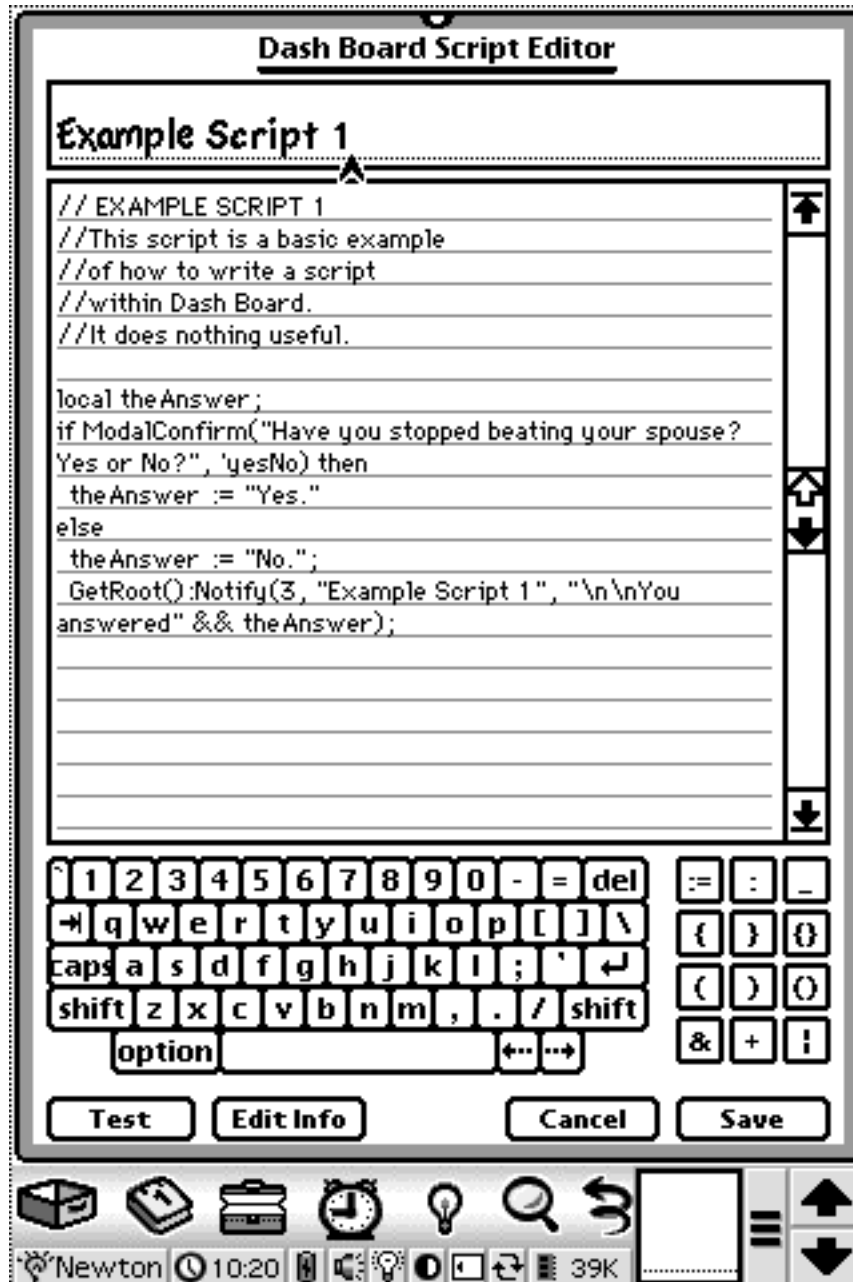
The New Script button creates a new script and opens the script editor.

The Import button allows you to import scripts written for use with other applications. Dash Board 1.0 currently can import scripts written for use with GestureLaunch 3 from Innovative Computer Solutions. Other import capabilities may be added in future versions of Dash Board. Note that scripts that rely on features specific to GestureLaunch 3 may not work in Dash Board. When importing a script, Dash Board will inspect the code and insert warnings in the comments at the beginning of the script if it determines that a script uses GestureLaunch 3-specific features which are not supported in Dash Board.

NOTE: Many scripts are available on the Internet for you to use free of charge. However, like any other software, scripts can be copyrighted and their use may be subject to licensing restrictions or purchase requirements. Please make sure that you are entitled to use any scripts you import into Dash Board.

The Set Font button sets the font used in the Script Editor window.

Editing a Script in the Script Editor



The script editor allows you to edit a script's source code and title.

The Save button saves the changes to the script. The Cancel button closes the script without saving changes.

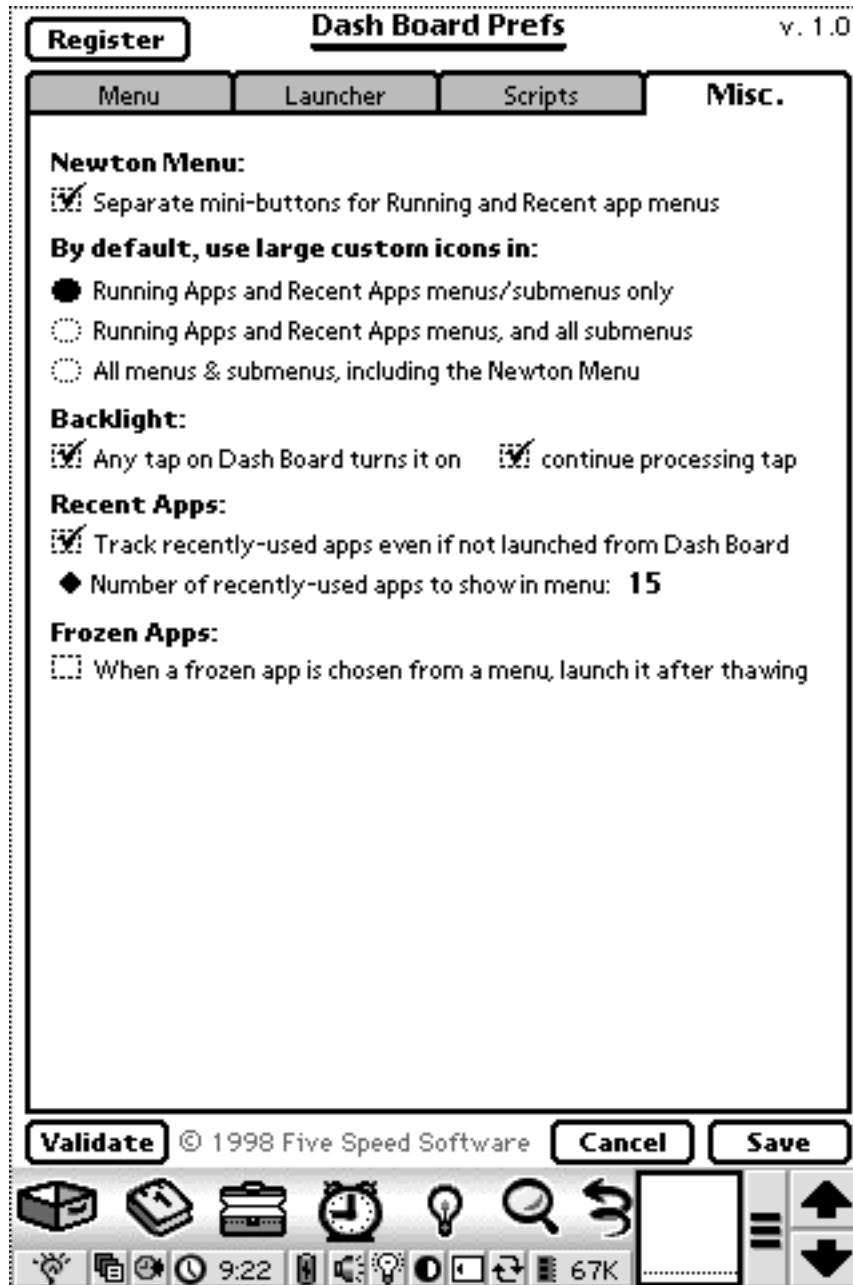
The Test button will try to compile the script, and notify you if an error occurs. If the script is compiled successfully, the script editor will ask you if you want to execute the script or not.

The Edit Info button opens a slip that allows you to edit the Info (text comments about the script) and Script ID (a unique ID for a script enables it to be distinguished from other scripts with the same name).

For more information about scripting with Dash Board, please visit the Dash Board Scripting Page at: <http://www.fivespeed.com/dashboard/scripting/>

7. THE MISC. PANEL

The Misc. panel allows you to set various miscellaneous options.



The "Separate mini-buttons for Running and Recent app menus" option makes the Dash Board Newton Menu button smaller, and adds two more mini-buttons to the Dash Board button bar. These two extra buttons allow one-tap access to the Running Apps and Recent Apps menus.

The "**By default, use large custom icons in:**" section controls how Dash Board uses large custom icons in its menus. You have three choices:

"Running Apps and Recent Apps menus/submenus only" causes Dash Board to display large icons only in these two menus/submenus.

"Running Apps and Recent Apps menus, and all submenus" causes Dash Board to display large custom icons in ALL submenus (but not the first level of the Newton Menu itself).

"All menus & submenus, including the Newton Menu" causes Dash Board to display large custom icons in all menus. (Not recommended, as it takes up so much screen space.)

The "**Backlight:**" section controls whether Dash Board should automatically turn on the backlight (if it is off) whenever it is tapped anywhere, and whether it should continue processing the tap (e.g., to pop up a menu) if that tap caused the backlight to be turned on.

The "**Recent Apps**" section controls whether Dash Board should add programs to its Recent Apps menu even if Dash Board did not launch them (i.e., the application icon was tapped in the Extras Drawer.) It also allow you to set th enumber of programs displayed in the Recent Apps menu.

The "**Frozen Apps:**" section controls how Dash Board should handle frozen apps when they are chosen from the Newton menu or launched via the Letter Launcher. By default, Dash Board simply unfreezes them. It can optionally automatically launch them as well, and refreeze them after they are quit. However, if you currently use another utility to automatically launch thawed packages, and/or refreeze them after they are closed, you should leave these options disabled in Dash Board, as they can cause compatibility problems.

8. REGISTERING AND CONTACTING FIVE SPEED SOFTWARE

Registering Dash Board

The best way to register Dash Board is to use our online registration system, using a credit card. Using a browser such as Netscape Navigator, Internet Explorer, or NetHopper, go to:

<http://order.kagi.com/?3RU>

Five Speed Software uses the Kagi payment processing service.

If for any reason online ordering is inconvenient for you, you can also download the Register program for Mac OS or Windows from:

<http://www.fivespeed.com/dashboard/>

This program will allow you to register Dash Board via email, postal mail, or fax.

Contacting Five Speed Software

Technical support for registered users is available via email from:

support@fivespeed.com

Feel free to email us with any questions, comments or suggestions you may have.

For more information about Five Speed Software, please visit our web site at:

<http://www.fivespeed.com>

Thank You!

From all of us here at Five Speed Software, thank you for using Dash Board! We look forward to serving you in the future with more great software products.